

City National Rochdale Municipal High Income Fund

Servicing Class - CNRMX

Annual Shareholder Report - September 30, 2024

This annual shareholder report contains important information about Servicing Class Shares of the City National Rochdale Municipal High Income Fund (the "Fund") for the period from October 1, 2023 to September 30, 2024. You can find additional information about the Fund at <https://www.citynationalrochdalefunds.com/dashboard>. You can also request this information by contacting us at 1-888-889-0799.

What were the Fund costs for the last year?

(based on a hypothetical \$10,000 investment)

<u>Fund Name</u>	<u>Costs of a \$10,000 investment</u>	<u>Costs paid as a percentage of a \$10,000 investment</u>
City National Rochdale Municipal High Income Fund, Servicing Class	\$91	0.85%

How did the Fund perform in the last year?

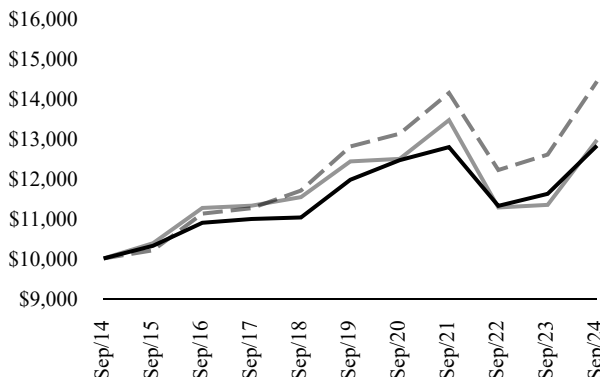
Bloomberg 60% Tax-Exempt High Yield/40% Municipal Investment Grade Custom Capped Custom Capped Custom Weighted Index Unhedged US The Servicing Class shares of the Fund posted a return of 3.45% for Q3 2024 versus the Bloomberg 60% Tax-Exempt High Yield/40% Municipal Investment Grade Custom Capped Custom Weighted Index Unhedged US return of 3.08%. Calendar year-to-date, as of September 30, 2024, the Fund returned 7.01% versus the Index return of 5.63%. For the fiscal year ending September 30, 2024, the Fund returned 14.32%, which underperformed its benchmark return of 14.53%.

High Yield municipal bonds have outperformed their Investment Grade counterparts in part due to strong technical data such as investor demand, as witnessed by positive fund flows, and lack of high yield supply. The Fund's effective duration has remained in line with its benchmark, if not slightly below throughout the year. The Fund has continued to reduce exposure to more speculative non-rated bonds and has added higher quality bonds. Fundamentally, high yield municipal credit quality remains strong, with weaknesses in only a couple of discrete sectors, such as small private universities and the industrial development sector. The portfolio management team utilizes a bottom's-up fundamental research process, which includes site visits and meeting with management.

How did the Fund perform during the last 10 years?

Total Return Based on \$10,000 Investment

- City National Rochdale Municipal High Income Fund, Servicing Class - \$12,964
- Bloomberg US Municipal Bond Index (USD)* - \$12,821
- - - Bloomberg 60% Tax-Exempt High Yield/40% Municipal Investment Grade Custom Capped Custom Capped Custom Weighted Index Unhedged US - \$14,429



Average Annual Total Returns as of September 30, 2024

<u>Fund/Index Name</u>	<u>1 Year</u>	<u>5 Years</u>	<u>10 Years</u>
City National Rochdale Municipal High Income Fund, Servicing Class	14.32%	0.85%	2.63%
Bloomberg US Municipal Bond Index (USD)*	10.37%	1.39%	2.52%
Bloomberg 60% Tax-Exempt High Yield/40% Municipal Investment Grade Custom Capped Custom Capped Custom Weighted Index Unhedged US	14.53%	2.42%	3.73%

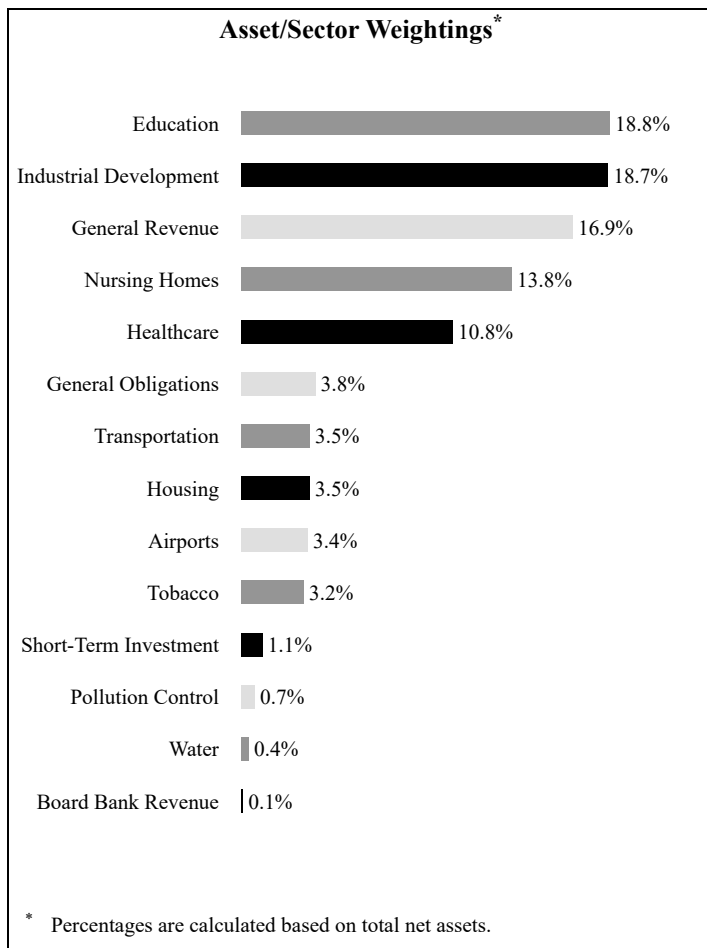
The line graph represents historical performance of a hypothetical investment of \$10,000 in the Fund during the last 10 years. Returns shown are total returns, which assume the reinvestment of dividends and capital gains. The table and graph presented above do not reflect the deduction of taxes a shareholder would pay on Fund distributions or the redemption of Fund Shares. **Past performance is not indicative of future performance.** Call 1-888-889-0799 or visit <https://www.citynationalrochdalefunds.com/dashboard> for current month-end performance.

* As of September 2024, pursuant to the new regulatory requirements, this index has been added to represent the broad-based securities market index.

Key Fund Statistics as of September 30, 2024

<u>Total Net Assets (000's)</u>	<u>Number of Holdings</u>	<u>Total Advisory Fees Paid (000's)</u>	<u>Portfolio Turnover Rate</u>
\$840,961	422	\$4,658	18%

What did the Fund invest in?



Top Ten Holdings

<u>Holding Name</u>	<u>Coupon Rate</u>	<u>Maturity Date</u>	<u>Percentage of</u>
			<u>Total Net Assets^(A)</u>
Puerto Rico, Sales Tax Financing, Sales Tax Revenue, Ser A-1	4.500%	07/01/34	1.2%
Westchester, Tobacco Asset Securitization, Sub-Ser C	5.125%	06/01/51	0.8%
Chicago, O'Hare International Airport, Ser A, AMT	5.000%	01/01/48	0.8%
North Texas, Tollway Authority, Convertible Capital Appreciation Project, Ser C	7.000%	09/01/31	0.7%
Puerto Rico, Sales Tax Financing, Sales Tax Revenue, Ser A-2	4.784%	07/01/58	0.7%
Legato Community Authority, Ser A-2	0.000%	12/01/51	0.7%
Sierra Vista, Industrial Development Authority	5.750%	06/15/53	0.7%
New York State, Dormitory Authority, Ser A	5.000%	03/15/54	0.7%
California State, Community Choice Financing Authority	3.000%	02/01/57	0.6%
Juban Crossing, Economic Development District, General Infrastructure Project, Ser C	7.000%	09/15/44	0.6%

(A) Short-Term Investments are not shown in the top ten chart.

Material Fund Changes

There were no material changes during the reporting period.

Changes in and Disagreements with Accountants

There were no changes in or disagreements with accountants during the reporting period.

Additional Information

For additional information about the Fund, including its prospectus, financial information, holdings, and proxy voting information, call or visit:

- 1-888-889-0799
- <https://www.citynationalrochdalefunds.com/dashboard>

Householding

Rule 30e-1 of the Investment Company Act of 1940 permits funds to transmit only one copy of a proxy statement, annual report or semi-annual report to shareholders (who need not be related) with the same residential, commercial or electronic address, provided that the shareholders have consented in writing and the reports are addressed either to each shareholder individually or to the shareholders as a group. This process is known as "householding" and is designed to reduce the duplicate copies of materials that shareholders receive and to lower printing and mailing costs for funds. Once implemented, if you would like to discontinue householding for your accounts, please call toll-free at 1-888-889-0799 to request individual copies of these documents. Once the Fund receives notice to stop householding, we will begin sending individual copies 30 days after receiving your request.